



# Swagelok Tube Installation Kit

Be prepared for any tube fitting installation or tube bending job with the Swagelok Installation Tool Kit. Available in 1/4", 3/8" and 1/2" tubing sets or a complete set of all three.

## Kit Components:

### Tube Cutter

Cuts stainless steel, soft copper, and aluminum tubing.

### Pre-swaging tools

A convenient tool for tube sizes 1" (25mm) and under.

### Hand Tube Benders

Easy-to-use benders reduces chances of damaging the tubing and reduces installation time.

### Ratchet Wrenches

Ideal for working in close quarters with limited room for movement.

### Gap Inspection Gauges

Ensures fitting's initial installation is sufficiently tightened.

### Tee Wrenches

Supports Swagelok union and tee crosses installation.

### Tube Deburring Tool

Removes burrs from tube cutting, reducing the chances of leakage or damage to components.

### Swagelok Tube Fitter's Manual

Provides detailed instructions for successful tubing selection and installation of Swagelok fittings.





### Tube Cutter

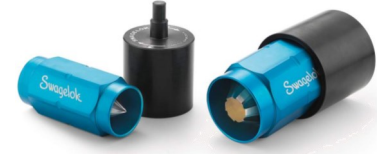
Cuts stainless steel, soft copper and aluminum tubing from 3/16" to 1" (4 to 25mm) outside diameter



- Reduced flare out and work hardening of tube end
- Knobs spaced in 1/8"-turn increments for easy reference

### Tube Deburring Tool

Removes burrs post-cutting from stainless steel, steel and hard tube ends



- For inside and outside diameters 3/16" to 1 1/2" (4 to 38 mm) tubing
- Steel blades and durable die-cast housing for long life

### Pre-swaging Tools

Convenience accessory for Swagelok tube fitting installations in close quarters



- Preswages the ferrule onto the tube, enabling installer to work in an open and safe environment
- Aids in successful installation and re-tightening

### Gap Inspection Gauges

Used by installers and inspectors to verify proper installation



- Used upon installation to ensure proper fitting tightening

### Hand Tube Benders

Provides consistent, high quality bends for tubing that is Swagelok tube fitting compatible



- Available in 1/4", 5/16", 3/8" and 1/2", as well as 6,8,10,12 mm tube sizes
- Handle design enhances leverage for bends up to 180 degrees
- Roll dies reduce bending force and tube ovality, compared to conventional slide block design

### Tee Wrenches

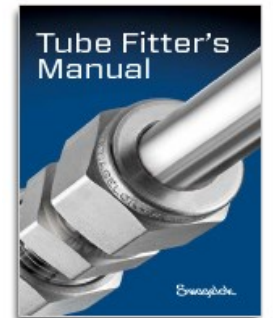
Provides support for Swagelok union tees and crosses installation



- Available in variety of sizes in order to hold fitting body firmly and precisely in various orientations
- Head and handle made of stainless steel with a cushioned vinyl grip

### Swagelok Tube Fitter's Manual

Delivers comprehensive instructions to assist during Swagelok tube fitting installations, including pictures, diagrams, and reference charts



Contact Us Today for More Information!



Buffalo: 716.875.9365 Rochester: 585.359.8470 Syracuse: 315.437.1287



Swagelok Western New York